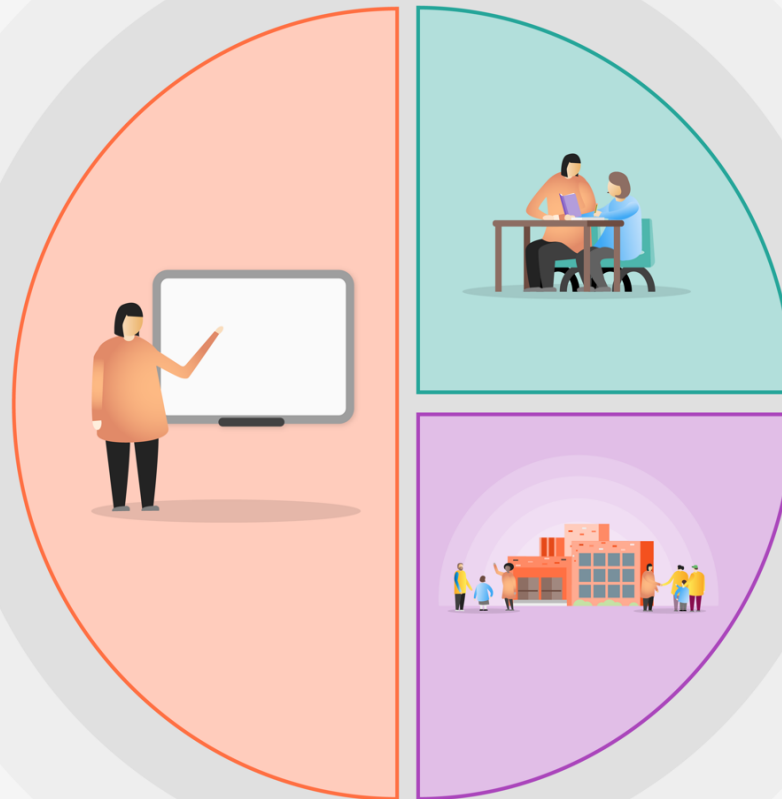


1 Teaching

- New covid19 curriculum model devised and in place to allow for **full access** to all subjects with extended lesson time.
- CPD provision for staff focusing on scaffolding and modelling (provision of key texts for staff to support development).
- Year 11 After School Interventions - every subject has designated slot each week
- Frequent low stakes testing in class to ensure all students experience success, tracked and monitored
- Focused Mock papers with all content to be revised published for students and parents to access.
- Tassomai, SENICA and Hegarty Maths online programmes purchased and introduced
- Additional IT equipment to support remote learning purchased and distributed
- Whole school focus on Reading additional resources purchased – Accelerated Reader programme used.
- CALs identify learning requiring face to face delivery.
- Mini Whiteboards and visualisers in every classroom.



2 Targeted academic support

- Focus on Reading and Comprehension launched. Including Direct Instruction & Phonics.
- DEAR programme across all year groups. New books purchased.
- Targeted literacy and numeracy interventions
- 1:1 and 1:4 support as part of the National Tutoring Programme – major investment.
- Additional teaching targeted sessions during half term and Easter breaks – focus on core subjects paid staffing.
- Alternative Provision programme established for Year 11
- Provision of GCSE revision books for all students in all subjects
- Train TAs for DI in Numeracy and Literacy

3 Wider strategies

- Full Teams platform available and develop teacher skills through CPD to increase number of live lessons and quality of provision.
- Most vulnerable students to receive support accessing online learning materials, including providing laptops.
- Employ new Family Liaison Officer to increase support for most vulnerable students
- First day calling for absent students
- Increased ELSA support